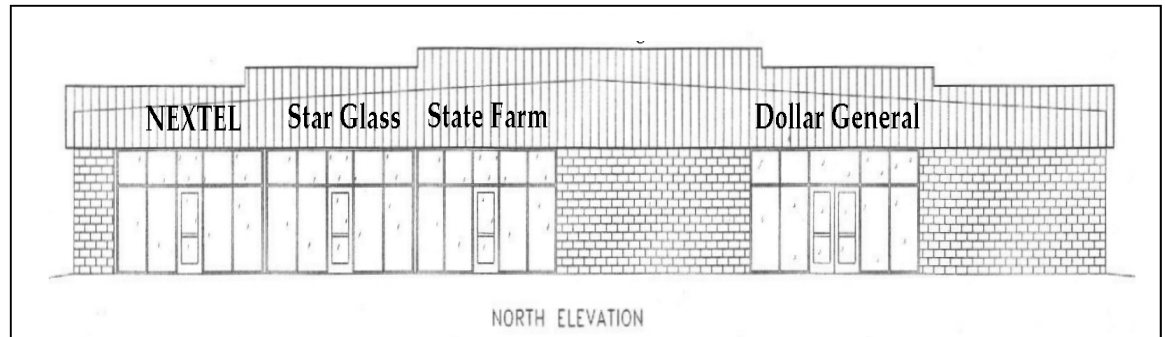


# FOR LEASE - 8,150 SF Available

1114 W. Chicago Road, Sturgis, Michigan

## New Retail Construction!

- Available Immediately
- Directly Across from SaveALot
- Newly Widened US-12
- Average Daily Traffic: 10,900 Cars
- We Pay Brokerage Commissions



## Join the company of established local retailers!

■ Lyn Nash - State Farm ■ Star Glass ■ Sprint

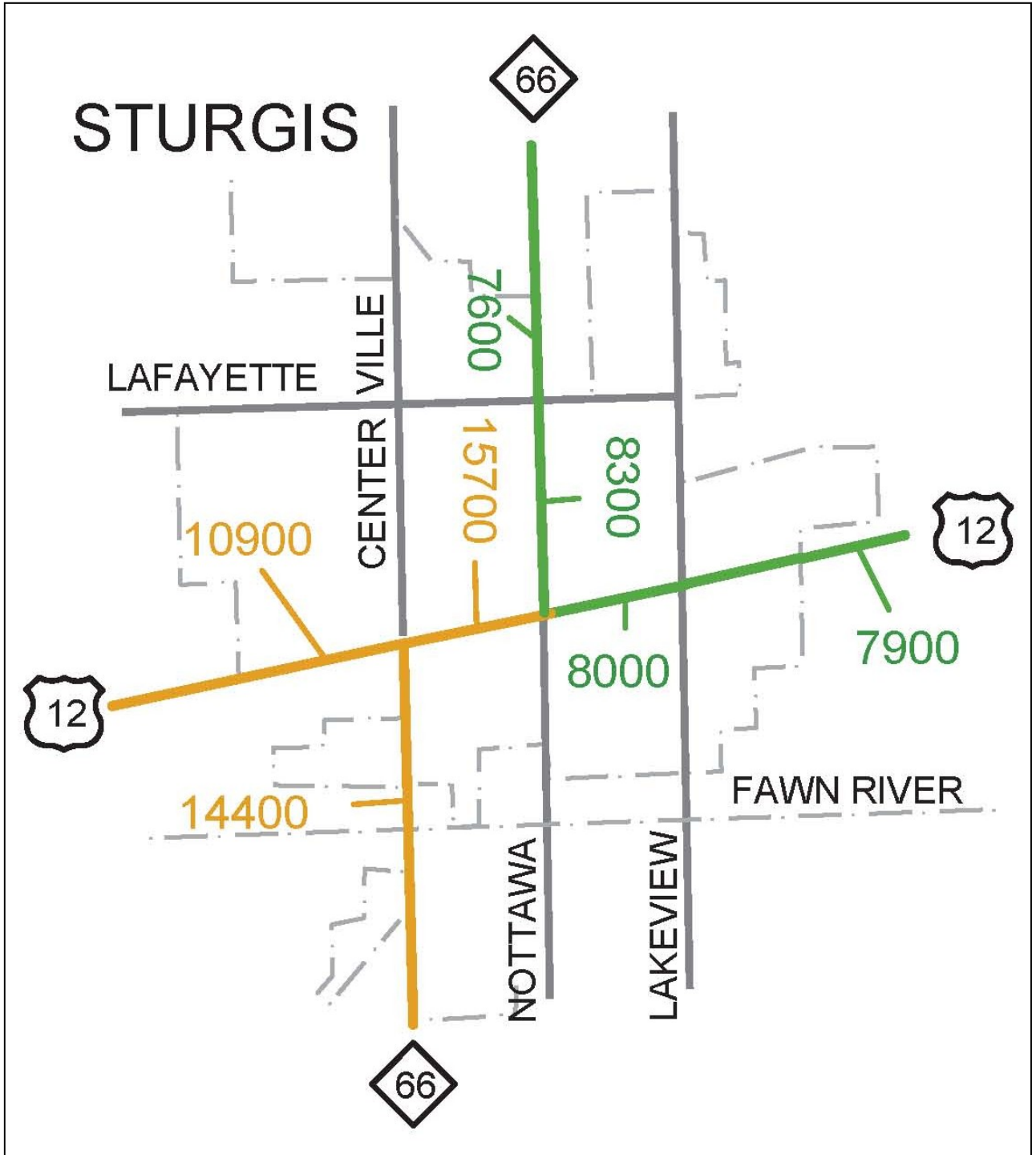


**PLAZACORP**  
REALTY ADVISORS, INC.  
211 E. Water St., Ste 201  
Kalamazoo, MI 49007  
p: 269.383.5775 f: 269.383.5774

**Contact: Jon Jurhs**  
m: 269.267.5977  
e: [jjurhs@plazacorp.net](mailto:jjurhs@plazacorp.net)

PlazaCorp Realty Advisors make no warranty or representation about the content of this brochure. It is the responsibility of its recipient to independently confirm its accuracy and completeness. Any projections, opinions, assumptions or estimates are used for example only and do not represent the current or future performance of the property.

Traffic Counts - 1114 W. Chicago Road, Sturgis, Michigan



211 E. Water St., Ste 201  
Kalamazoo, MI 49007  
p: 269.383.5775 f: 269.383.5774